

▼ Shown from left to right: RD-2510, RD-96, RD-256, RD-41, RD-166



High Precision and High Cycle Performance

Golden Ring Design
Enerpac RD-Cylinders are provided with the Golden Ring Design, for long, trouble-free performance.

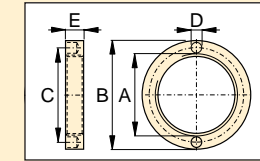


This paper mill uses RD cylinders for precision when trimming. ▶

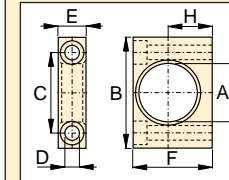
- Designed for long life, the best choice for production applications
- Unique mounting configurations simplify fixturing
- Baked enamel finish for increased corrosion resistance
- Double-acting operation develops force in both directions, providing maximum versatility
- Plunger wiper reduces contamination, extending cylinder life

Nominal Cylinder Capacity (tons)	Stroke (in)	Model Number	Max. Cylinder Capacity (tons)		Cylinder Effective Area (in ²)		Oil Capacity (in ³)		Coll. Height	Ext. Height	Body Length	Out. Dia.	Cyl. Bore Dia.	Plgr. Dia.
			Advance	Retract	Advance	Retract	Advance	Retract						
			A (in)	B (in)	C (in)	D (in)	E (in)	F (in)						
4	1.13	RD-41	4	2	.79	.34	.88	.39	7.31	8.44	6.38	2.00	1.00	.75
	3.13	RD-43	4	2	.79	.34	2.45	1.07	9.31	12.44	8.38	2.00	1.00	.75
	6.13	RD-46	4	2	.79	.34	4.81	2.10	12.31	18.44	11.38	2.00	1.00	.75
9	1.13	RD-91	9	5	1.77	.98	1.99	1.10	8.75	9.88	7.80	2.50	1.50	1.00
	3.13	RD-93	9	5	1.77	.98	5.52	3.07	10.78	13.91	9.80	2.50	1.50	1.00
	6.13	RD-96	9	5	1.77	.98	10.82	6.01	13.78	19.91	12.80	2.50	1.50	1.00
	10.13	RD-910	9	5	1.77	.98	17.89	9.94	17.78	27.91	16.81	2.50	1.50	1.00
16	6.25	RD-166	16	8	3.14	1.66	19.63	10.35	15.31	21.56	14.13	3.00	2.00	1.38
	10.25	RD-1610	16	8	3.14	1.66	32.20	16.98	19.31	29.56	18.11	3.00	2.00	1.38
25	6.25	RD-256	25	11	4.91	2.15	30.68	13.42	16.69	22.94	15.63	3.63	2.50	1.88
	10.25	RD-2510	25	11	4.91	2.15	50.31	22.01	20.69	30.94	19.61	3.63	2.50	1.88

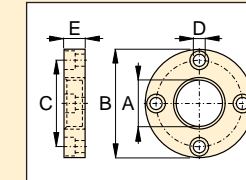
RD CYLINDER ATTACHMENTS



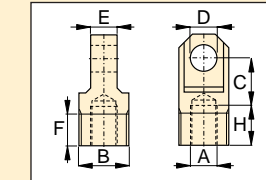
Retainer Nut
For locking foot or flange mountings. Tightens onto cylinder collar threads (included with foot and flange mounting kits)



Foot Mounting
Mounts onto cylinder collar



Flange Mounting
Mounts onto cylinder collar



Clevis Eye
Threads onto plunger or into cylinder base

Model Number	RD-Cyl: (tons)	Dimensions (in)						
		A	B	C	D	E	F	H
Foot Mounting with Retainer Nut								
AD-141	4	1.38	3.00	2.00	.41	.76	2.25	1.25
AD-171	9	2.00	4.00	2.88	.53	1.00	3.25	1.75
AD-181	16	2.63	5.00	3.76	.78	1.38	4.00	2.06
AD-191	25	3.25	6.26	4.62	1.03	1.76	4.88	2.50
Flange Mounting with Retainer Nut								
AD-142	4	1.38	3.88	3.09	.41	.75	-	-
AD-172	9	2.00	4.75	3.88	.41	1.00	-	-
AD-182	16	2.63	5.63	4.56	.53	1.38	-	-
AD-192	25	3.25	6.50	5.34	.66	1.75	-	-
Retainer Nut								
AD-143	4	1 ³ / ₈ "-12 UNF	2.25	1.81	.25	.38	-	-
AD-173	9	2"-12	3.00	2.50	.27	.50	-	-
AD-183	16	2 ⁵ / ₈ "-16	3.63	3.12	.27	.75	-	-
AD-193	25	3 ¹ / ₄ "-16	4.25	3.75	.27	1.00	-	-
Clevis Eye*								
AD-150	4	1 ¹ / ₂ "-20	1 ¹ / ₈ "-20	52.4	.63	.63	.75	23.8
AD-151	9	3 ³ / ₄ "-16	1 ¹ / ₁₆ "-18	57.1	.75	1.00	1.00	23.8
AD-152	16	1 ¹ / ₈ "-12	2 ³ / ₁₆ "-16	77.8	1.00	1.25	1.00	30.2
AD-153	25	1 ¹ / ₂ "-12	2 ³ / ₄ "-16	77.8	1.25	1.50	1.00	27.0

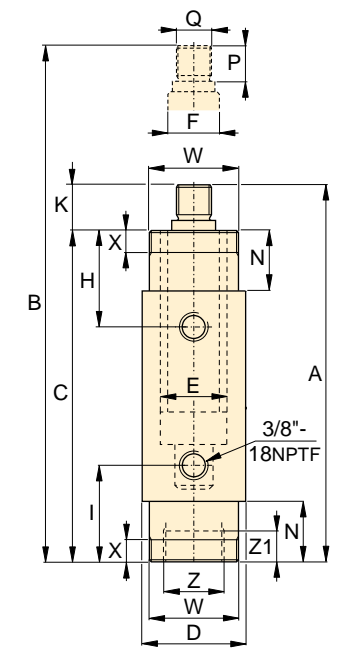
RD Series



Capacity:
4-25 tons

Stroke:
1.13-10.25 inch

Maximum Operating Pressure:
10,000 psi



	Top to Ret. Port H (in)	Bottom to Adv. Port I (in)	Plunger Protrusion K (in)	Neck Length N (in)	Plunger Thread Length P (in)	Plunger External Thread Q (in)	Cylinder Mounting Dimensions (in)					Weight (lbs)	Model Number
							Collar Thread W	Collar Thread Length X	Int. Base Thread Z	Int. Base Thread Length Z1	Pin to Pin with Clevis Eyes Fitted*		
							W	X	Z	Z1			
	1.84	1.84	.94	1.13	.75	1 ¹ / ₂ "-20	1 ³ / ₈ "-12	.44	1 ¹ / ₈ "-20	.35	10.15	4.8	RD-41
	1.84	1.84	.94	1.13	.75	1 ¹ / ₂ "-20	1 ³ / ₈ "-12	.44	1 ¹ / ₈ "-20	.35	12.15	6.4	RD-43
	1.84	1.84	.94	1.13	.75	1 ¹ / ₂ "-20	1 ³ / ₈ "-12	.44	1 ¹ / ₈ "-20	.35	15.15	9.0	RD-46
	2.25	2.25	.98	1.50	.75	3 ³ / ₄ "-16	2"-12	.56	1 ¹ / ₁₆ "-18	.55	11.76	9.0	RD-91
	2.25	2.25	.98	1.50	.75	3 ³ / ₄ "-16	2"-12	.56	1 ¹ / ₁₆ "-18	.55	13.79	11.0	RD-93
	2.25	2.25	.98	1.50	.75	3 ³ / ₄ "-16	2"-12	.56	1 ¹ / ₁₆ "-18	.55	16.79	14.0	RD-96
	2.25	2.25	.98	1.50	.75	3 ³ / ₄ "-16	2"-12	.56	1 ¹ / ₁₆ "-18	.55	20.79	19.0	RD-910
	2.88	2.88	1.19	2.13	1.00	1 ¹ / ₈ "-12	2 ⁵ / ₈ "-16	.88	2 ³ / ₁₆ "-16	.94	20.31	22.0	RD-166
	2.88	2.88	1.19	2.13	1.00	1 ¹ / ₈ "-12	2 ⁵ / ₈ "-16	.88	2 ³ / ₁₆ "-16	.94	24.31	29.0	RD-1610
	3.50	3.50	1.06	2.75	1.00	1 ¹ / ₂ "-12	3 ¹ / ₄ "-16	1.13	2 ³ / ₄ "-16	1.02	20.73	36.0	RD-256
	3.50	3.50	1.08	2.75	1.00	1 ¹ / ₂ "-12	3 ¹ / ₄ "-16	1.13	2 ³ / ₄ "-16	1.02	24.73	46.0	RD-2510